



CyberPower®

BACKUP UPS
VALUE SOHO SERIES
Product Catalog



- **Automatic Voltage Regulation**
- **GreenPower UPS™ Energy-saving Technology**
- **Data Line Protection for Phone, Fax, or Ethernet**
- **PowerPanel Management Software for Scheduled-shutdown & Restart**

APPLICATIONS

- PCs & Workstations
- Printers & Office Devices
- Phone/Fax/Modem
- NAS & Servers
- DVRs/Surveillance Systems
- Computers & Laptops
- SOHO Networking Devices
- Video/Audio Equipment
- Home Theater Systems
- POS Systems

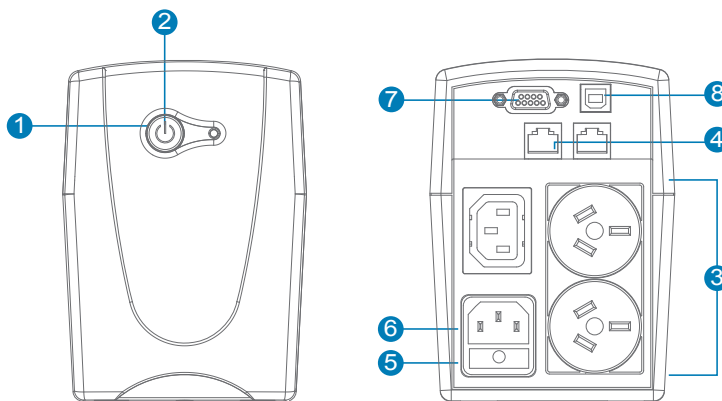
SERIES FEATURES

- Line-Interactive UPS Topology
- Automatic Voltage Regulation (AVR)
- GreenPower UPS™ Technology
- Auto-Restart/Auto-Charge
- Fire-Resistance Capability
- Configurable Alarm
- EMI, RFI, Surge and Spike Protection
- Phone/Fax/Modem/DSL/Network Protection
- Tower Form Factor
- USB and Serial Connectivity Port
- PowerPanel® Personal Edition Software



PRODUCT CALLOUTS

1. Power On Indicator
2. Power On/Off Switch
3. Battery Backup & Surge Protected Outlets
4. Communication Protection Ports RJ11/RJ45
5. Input Fuse
6. AC Inlet
7. Serial Port
8. USB Port



TECHNICAL SPECIFICATIONS

Model Name	VALUE600EI-AU	VALUE800EI-AU	VALUE1000EI-AU
General			
UPS Topology	Line-Interactive	Line-Interactive	Line-Interactive
Energy Saving	Yes	Yes	Yes
Energy Star Qualified	-	-	-
Active PFC Compatible	-	-	-
Input			
Voltage	220/230/240 Vac	230Vac	230Vac
Input Voltage Range	170Vac - 290Vac	170Vac - 290Vac	170Vac - 290Vac
Input Frequency Range	45-65Hz	45-65Hz	45-65Hz
Rated Input current	2.72A	3.64A	4.55A
Plug Type	AU	AU	AU
Output			
VA	600	800	1000
Watt.	360	480	550
On Battery Waveform	Simulated Sine Wave	Simulated Sine Wave	Simulated Sine Wave
On Battery Voltage	220-240Vac	220-240Vac	220-240Vac
Automatic Voltage Regulation (AVR)	Single Boost / Single Buck	Single Boost / Single Buck	Single Boost / Single Buck
On Battery Frequency	50/60Hz ± 1%	50/60Hz ± 1%	50/60Hz ± 1%
Outlets - Total	2	2	2
Outlet Type	AU	AU	AU
Outlets - Battery & Surge Protected	2	2	2
Outlets - Surge-Only Protected	-	-	-
Outlets - Battery Backup	-	-	-
Outlets - Extension	-	-	-
Outlets - Widely Spaced	-	-	-
Outlets - Critical Load	-	-	-
Outlets - Non-Critical Load (NCL)	-	-	-
Outlets - ECO Controlled Outlets	-	-	-
USB Charging Ports	-	-	-
Transfer Time	4ms	4ms	4ms
Battery			
Runtime at 60W (min)	58-75	68-88	73-95
Runtime at 90W (min)	21-27	23-30	25-33
Battery Type	Sealed Lead Acid	Sealed Lead Acid	Sealed Lead Acid
Battery Quantity	1	1	1
User Replaceable	-	-	-
Hot-Swappable	-	-	-
Typical Recharge Time	8 Hours	8 Hours	8 Hours
Extended Battery Module	-	-	-
Replacement Battery Pack	-	-	-
Replacement Battery Pack Quantity	-	-	-
Surge Protection & Filtering			
Surge Suppression	125 Joules (L-N)	125 Joules (L-N)	125 Joules (L-N)
Phone Protection RJ11	-	-	-
Phone / Network Protection RJ11/RJ45	1-In, 1-Out	1-In, 1-Out	1-In, 1-Out
Management & Communications			
LCD Control Panel	-	-	-
Detachable LCD Control Panel Option	-	-	-
HID Compliant USB Port	Yes	Yes	Yes
Serial Port	Yes	Yes	Yes
Emergency Power Off (EPO) Port	-	-	-
Dry Contacts	-	-	-
LED Indicators	Power On, Using Battery	Power On, Using Battery	Power On, Using Battery
Audible Alarms	On Battery, Low Battery, Overload, Fault	On Battery, Low Battery, Overload, Fault	On Battery, Low Battery, Overload, Fault
Software	PowerPanel® Personal Edition	PowerPanel® Personal Edition	PowerPanel® Personal Edition
SNMP / HTTP Remote Monitoring	-	-	-
Physical			
Form Factor	Tower	Tower	Tower
Physical - UPS Module			
Dimensions (WxHxD) (mm.)	100 x 140 x 300	100 x 140 x 300	100 x 140 x 300
Weight (kg.)	4.6	5.2	5.5
Installed Rack Height	-	-	-
Physical - Power Module			
Dimensions (WxHxD) (mm.)	-	-	-
Weight (kg.)	-	-	-
Power Module Rack Height	-	-	-
Physical - Battery Module			
Dimensions (WxHxD) (mm.)	-	-	-
Weight (kg.)	-	-	-
Battery Module Rack Height	-	-	-
Environmental			
Operating Temperature	+ 32°F to 104° F / 0° C to 40° C	+ 32°F to 104° F / 0° C to 40° C	+ 32°F to 104° F / 0° C to 40° C
Operating Humidity	0% - 90% non-condensing	0% - 90% non-condensing	0% - 90% non-condensing
Operating Elevation	0-3000 meters	0-3000 meters	0-3000 meters
Storage Temperature	- 4°F to 122° F / -20° C to 50° C	- 4°F to 122° F / -20° C to 50° C	- 4°F to 122° F / -20° C to 50° C
Storage Relative Humidity	0% - 90%	0% - 90%	0% - 90%
Online Thermal Dissipation	99 BTU/hr	102 BTU/hr	109 BTU/hr

#All specifications are subject to change without notice.
©2016 CyberPower Systems. All Trademarks are the property of their owners.





- **Automatic Voltage Regulation**
- **GreenPower UPS™ Energy-saving Technology**
- **Data Line Protection for Phone, Fax, or Ethernet**
- **PowerPanel Management Software for Scheduled-shutdown & Restart**

APPLICATIONS

- PCs & Workstations
- Printers & Office Devices
- Phone/Fax/Modem
- NAS & Servers
- DVRs/Surveillance Systems
- Computers & Laptops
- SOHO Networking Devices
- Video/Audio Equipment
- Home Theater Systems
- POS Systems

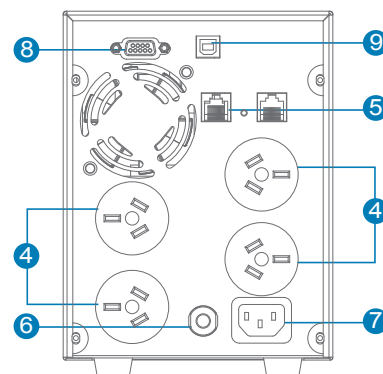
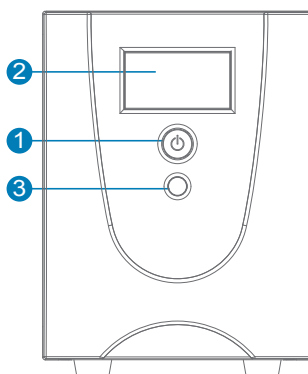
SERIES FEATURES

- Line-Interactive UPS Topology
- Automatic Voltage Regulation (AVR)
- GreenPower UPS™ Technology
- Auto-Restart/Auto-Charge
- Fire-Resistance Capability
- Configurable Alarm With Mute Option
- EMI, RFI, Surge and Spike Protection
- Phone/Fax/Modem/DSL/Network Protection
- Tower Form Factor
- User-Replaceable Batteries
- LCD Status Monitor
- USB and Serial Connectivity Port
- PowerPanel® Personal Edition Software



PRODUCT CALLOUTS

1. Power On/Off Switch
2. LCD Display Panel
3. Function Buttons
4. Battery Backup & Surge Protected Outlets
5. Communication Protection Ports RJ11/RJ45
6. Input Circuit Breaker
7. AC Inlet
8. Serial Port
9. USB Port



TECHNICAL SPECIFICATIONS

Model Name	VALUE1200ELCD-AU	VALUE1500ELCD-AU	VALUE2200ELCD-AU
General			
UPS Topology	Line-Interactive	Line-Interactive	Line-Interactive
Energy Saving	Yes	Yes	Yes
Energy Star Qualified	-	-	-
Active PFC Compatible	-	-	-
Input			
Voltage	230Vac	230Vac	230Vac
Input Voltage Range	170Vac - 290Vac	170Vac - 290Vac	170Vac - 290Vac
Input Frequency Range	45-65Hz	45-65Hz	45-65Hz
Rated Input current	5.45A	6.82A	10A
Plug Type	AU	AU	AU
Output			
VA	1200	1500	2200
Watt.	720	900	1320
On Battery Waveform	Simulated Sine Wave	Simulated Sine Wave	Simulated Sine Wave
On Battery Voltage	220-240Vac	220-240Vac	220-240Vac
Automatic Voltage Regulation (AVR)	Single Boost / Single Buck	Single Boost / Single Buck	Single Boost / Single Buck
On Battery Frequency	50/60Hz ± 1%	50/60Hz ± 1%	50/60Hz ± 1%
Outlets - Total	4	4	4
Outlet Type	AU	AU	AU
Outlets - Battery & Surge Protected	4	4	4
Outlets - Surge-Only Protected	-	-	-
Outlets - Battery Backup	-	-	-
Outlets - Extension	-	-	-
Outlets - Widely Spaced	-	-	-
Outlets - Critical Load	-	-	-
Outlets - Non-Critical Load (NCL)	-	-	-
Outlets - ECO Controlled Outlets	-	-	-
USB Charging Ports	-	-	-
Transfer Time	4ms Typical	4ms Typical	4ms Typical
Battery			
Runtime at 60W (min)	118-142	141-172	156-179
Runtime at 90W (min)	48-60	54-73	65-90
Battery Type	Sealed Lead Acid	Sealed Lead Acid	Sealed Lead Acid
Battery Quantity	2	2	2
User Replaceable	Yes	Yes	Yes
Hot-Swappable	Yes	Yes	Yes
Typical Recharge Time	8 Hours	8 Hours	8 Hours
Extended Battery Module	-	-	-
Replacement Battery Pack	RBP0084	RBP0085	RBP0086
Replacement Battery Pack Quantity	2	2	2
Surge Protection & Filtering			
Surge Suppression	125 Joules (L-N)	125 Joules (L-N)	125 Joules (L-N)
Phone Protection RJ11	-	-	-
Phone / Network Protection RJ11/RJ45	1-In, 1-Out	1-In, 1-Out	1-In, 1-Out
Management & Communications			
LCD Control Panel	Yes	Yes	Yes
Detachable LCD Control Panel Option	-	-	-
HID Compliant USB Port	Yes	Yes	Yes
Serial Port	Yes	Yes	Yes
Emergency Power Off (EPO) Port	-	-	-
Dry Contacts	-	-	-
LED Indicators	-	-	-
Audible Alarms	On Battery, Low Battery, Overload, Fault	On Battery, Low Battery, Overload, Fault	On Battery, Low Battery, Overload, Fault
Software	PowerPanel® Personal Edition	PowerPanel® Personal Edition	PowerPanel® Personal Edition
SNMP / HTTP Remote Monitoring	-	-	-
Physical			
Form Factor	Tower	Tower	Tower
Physical - UPS Module			
Dimensions (WxHxD) (mm.)	140 x 180 x 326	140 x 180 x 326	140 x 180 x 326
Weight (kg.)	11.2	13.2	14.5
Installed Rack Height	-	-	-
Physical - Power Module			
Dimensions (WxHxD) (mm.)	-	-	-
Weight (kg.)	-	-	-
Power Module Rack Height	-	-	-
Physical - Battery Module			
Dimensions (WxHxD) (mm.)	-	-	-
Weight (kg.)	-	-	-
Battery Module Rack Height	-	-	-
Environmental			
Operating Temperature	+ 32°F to 104°F / 0°C to 40°C	+ 32°F to 104°F / 0°C to 40°C	+ 32°F to 104°F / 0°C to 40°C
Operating Humidity	10% - 95% non-condensing	10% - 95% non-condensing	10% - 95% non-condensing
Operating Elevation	0-3000 meters	0-3000 meters	0-3000 meters
Storage Temperature	+ 5 °F to 113°F / -15°C to 45 °C	+ 5 °F to 113°F / -15°C to 45 °C	+ 5 °F to 113°F / -15°C to 45 °C
Storage Relative Humidity	10% - 95%	10% - 95%	10% - 95%
Online Thermal Dissipation	167 BTU/hr	198 BTU/hr	225 BTU/hr

#All specifications are subject to change without notice.
©2016 CyberPower Systems. All Trademarks are the property of their owners.



UPS SYSTEMS | PDUs | SURGE PROTECTORS | POWER INVERTERS