



# Network Infrastructure for the Enterprise

Preferred Parts – Australia

**PANDUIT™**

# Network Infrastructure for the Enterprise

Today's enterprise IP networks support ever-expanding converged applications for voice, data, and video, as well as functions such as intelligent lighting, security, safety systems, and more.

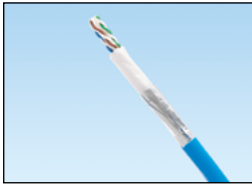
Panduit Enterprise Networks provide the industry's most comprehensive and holistic portfolio of products and services that enable sustainable, energy-efficient enterprises. Innovative design features provide easy installation, reduced maintenance costs, and improved network reliability and flexibility.

This catalog features the most common offering for an enterprise physical infrastructure deployment. For the complete enterprise offering, please contact your local Panduit representative or visit us at <http://www.panduit.com/en/solutions/enterprise-solutions>.

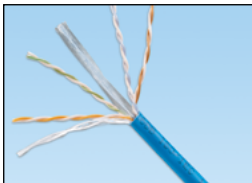
## Table of Contents

Copper Cable .....	3	Fibre Adapter Module and Panels.....	8
RJ45 Jack Module.....	3	Fibre Pigtail Sets .....	8
Patch Panels, Kits and Accessories .....	4	Cabinet.....	9
RJ45 Patch Cords .....	5	Racks, Shelves and Accessories.....	9
Patch Cord Bands .....	5	Cable Managers.....	9
Clipsal/HPM Faceplate Adapter Bezel .....	6	Cable Manager Capacity Chart .....	10
Faceplate .....	6	Power Distribution Unit.....	10
Work Station Mini Faceplate.....	6	Blanking Panels.....	10
Surface Mount Box .....	6	Enclosures .....	10
Fibre Optic Cable – Indoor/Outdoor .....	7	Labeling .....	11
Fibre Connectors and Patch Cords.....	7	Security Devices .....	11
Fibre Enclosures .....	8	Tools.....	11

## Copper Cable



PUL6AM04WH-CEG



PUL6004BUY

Part Number	Description	UOM	MOQ
<b>Unshielded</b>			
PUL6ASD04WH-EG	Category 6A U/UTP cable, 26 AWG, White, LSZH (60332-1), 305m (60m max PL).	Reel	18
PUL6AM04WH-CEG	Category 6A advanced MaTriX U/UTP cable, 23 AWG, White, LSZH (60332-1), 305m.	Reel	18
PUL6004BUY	Category 6 U/UTP cable, 23 AWG, Blue, LSZH (60332-1), 305m.	Box	27
PUC5504IGY	Category 5e U/UTP cable, 24 AWG, Gray, CM, 305m.	Box	36
<b>Shielded</b>			
PFL6X04WH-CEG	Category 6A F/UTP cable, 23 AWG, White, LSZH (60332-1), 305m.	Reel	12
PFC6004BU-G	Category 6 F/UTP cable, 23 AWG, Blue, CM, 305m.	Reel	27

Note: F/UTP means Foil around Unshielded Twisted Pairs = shielded cable.  
LSZH means Low Smoke Zero Halogen.

## RJ45 Jack Module



CJ6X88TGBL



CJS688TGY



CJRCAPBU

Part Number	Description	Std. Pkg. Qty.	Std. Ctn. Qty.
<b>Unshielded</b>			
CJ6X88TGBL	Category 6A RJ45 UTP Mini-Com™ Jack, Black.	1	50
CJ6X88TGBU	Category 6A RJ45 UTP Mini-Com™ Jack, Blue.	1	50
CJ6X88TGIW	Category 6A RJ45 UTP Mini-Com™ Jack, International White.	1	50
CJ688TGBL	Category 6 RJ45 UTP Mini-Com™ Jack, Black.	1	50
CJ688TGBU	Category 6 RJ45 UTP Mini-Com™ Jack, Blue.	1	50
CJ688TGIW	Category 6 RJ45 UTP Mini-Com™ Jack, International White.	1	50
CJ5E88TGBL	Category 5E RJ45 UTP Mini-Com™ Jack, Black.	1	50
CJ5E88TGBU	Category 5E RJ45 UTP Mini-Com™ Jack, Blue.	1	50
CJ5E88TGIW	Category 5E RJ45 UTP Mini-Com™ Jack, International White.	1	50
<b>Shielded</b>			
CJS6X88TGY	Category 6A RJ45 shielded Mini-Com™ Jack, Black.	1	50
CJS688TGY	Category 6 RJ45 shielded Mini-Com™ Jack, Black.	1	50
<b>Termination Cap</b>			
CJRCAPBU	Right angle termination cap for CJ6X88TG.	10	100
CJRCAPIW	Right angle termination cap for CJ688TG.	10	100

Contact Panduit Customer Service for other colours and bulk packs.

Patch Panels, Kits, and Accessories



UICMPP24BLY



CPP48HDWBL



CPPA48HDWBL



DP245E88TGY



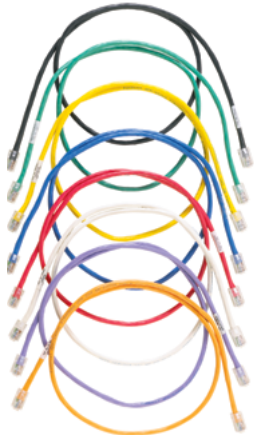
SRB19BLY



SRBBRKT

Part Number	Description	Std. Pkg. Qty.	Std. Ctn. Qty.
<b>Modular</b>			
UICMPP24BLY	24-port patch panel, with six UICPPL4BL faceplates.	1	10
UICMPPA24BLY	24-port angled patch panel, with six UICPPL4BL faceplates.	1	10
CPPL24WBL	24-port patch panel with labels, with six CFFPL4 faceplates.	1	10
CPPLA24WBL	24-port angled patch panel with labels, with six CFFPL4 faceplates.	1	10
CPP48HDWBL	48-port high-density patch panel, with rear-mounted faceplates.	1	10
CPPA48HDWBL	48-port angled high-density patch panel, with rear-mounted faceplates.	1	10
CP24BLY	24-port all-metal shielded patch panel.	1	10
CPA24BLY	24-port angled all-metal shielded patch panel.	1	10
<b>110 Punchdown</b>			
DP245E88TGY	24-port 110 style, Category 5e punchdown patch panel.	1	10
<b>Patch Panel Kits</b>			
UICMPK6G24BL	24-port patch panel (UICMPP24BL), with 24 Category 6 TG jacks (CJ688TGBL).	1	10
CPPKL6G24WBL	24-port patch panel (CPPL24WBL), with 24 Category 6 TG jacks (CJ688TGBL).	1	10
<b>Strain Relief</b>			
SRB19BLY	Strain relief bar.	1	10
SRBBRKT	Strain relief bar quick release bracket kit.	1	10

## RJ45 Patch Cords



UTP6ASD\*M\*\*



UTP6ASD\*



STP6C\*



UTPSP\*



UTPCH\*

## Patch Cord Bands



PCBAND\*\*-Q

Part Number	Description	Std. Pkg. Qty.	Std. Ctn. Qty.
<b>Category 6A</b>			
UTP6ASD1M	Category 6A 26 AWG patch cord, CM, White, 1m.	1	10
UTP6ASD1MBU	Category 6A 26 AWG patch cord, CM, Blue, 1m.	1	10
UTP6ASD2M	Category 6A 26 AWG patch cord, CM, White, 2m.	1	10
UTP6ASD2MBU	Category 6A 26 AWG patch cord, CM, Blue, 2m.	1	10
UTP6ASD3M	Category 6A 26 AWG patch cord, CM, White, 3m.	1	10
UTP6ASD3MBU	Category 6A 26 AWG patch cord, CM, Blue, 3m.	1	10
UTP6ASD5M	Category 6A 26 AWG patch cord, CM, White, 5m.	1	10
UTP6ASD5MBU	Category 6A 26 AWG patch cord, CM, Blue, 5m.	1	10

### Category 6A Shielded

STP6C1MBU	Category 6A F/UTP patch cord, CM/LSZH, Blue, 1m.	1	10
STP6C1MIG	Category 6A F/UTP patch cord, CM/LSZH, International Gray, 1m.	1	10
STP6C2MBU	Category 6A F/UTP patch cord, CM/LSZH, Blue, 2m.	1	10
STP6C2MIG	Category 6A F/UTP patch cord, CM/LSZH, International Gray, 2m.	1	10
STP6C3MBU	Category 6A F/UTP patch cord, CM/LSZH, Blue, 3m.	1	10
STP6C3MIG	Category 6A F/UTP patch cord, CM/LSZH, International Gray, 3m.	1	10

### Category 6

UTPSP1MY	Category 6 UTP patch cord, CM, White, 1m.	1	10
UTPSP1MBUY	Category 6 UTP patch cord, CM, Blue, 1m.	1	10
UTPSP2MY	Category 6 UTP patch cord, CM, White, 2m.	1	10
UTPSP2MBUY	Category 6 UTP patch cord, CM, Blue, 2m.	1	10
UTPSP3MY	Category 6 UTP patch cord, CM, White, 3m.	1	10
UTPSP3MBUY	Category 6 UTP patch cord, CM, Blue, 3m.	1	10

### Category 6 28 AWG

UTP28SP8INBU	Category 6 UTP 28 AWG patch cord, CM/LSZH, Blue, 200mm.	1	10
UTP28SP1M	Category 6 UTP 28 AWG patch cord, CM/LSZH, White, 1m.	1	10
UTP28SP1MBU	Category 6 UTP 28 AWG patch cord, CM/LSZH, Blue, 1m.	1	10
UTP28SP2M	Category 6 UTP 28 AWG patch cord, CM/LSZH, White, 2m.	1	10
UTP28SP2MBU	Category 6 UTP 28 AWG patch cord, CM/LSZH, Blue, 2m.	1	10
UTP28SP3M	Category 6 UTP 28 AWG patch cord, CM/LSZH, White, 3m.	1	10
UTP28SP3MBU	Category 6 UTP 28 AWG patch cord, CM/LSZH, Blue, 3m.	1	10

### Category 5e

UTPCH1MY	Category 5e patch cord, CM, White, 1m.	1	10
UTPCH1MBUY	Category 5e patch cord, CM, Blue, 1m.	1	10
UTPCH2MY	Category 5e patch cord, CM, White, 2m.	1	10
UTPCH2MBUY	Category 5e patch cord, CM, Blue, 2m.	1	10
UTPCH3MY	Category 5e patch cord, CM, White, 3m.	1	10
UTPCH3MBUY	Category 5e patch cord, CM, Blue, 3m.	1	10

Contact Customer Service for other colours and lengths.

Part Number	Description	Std. Pkg. Qty.	Std. Ctn. Qty.
PCBAND**-Q	Patch cord band, snap on.	25	25

Replace \*\* with BL(Black), RD (Red), OR (Orange), YL (Yellow), GR (Green), BU (Blue), or VL (Violet).

**Clipsal/HPM Faceplate Adapter Bezel**



**CAFPAWH-X**

Part Number	Description	Std. Pkg. Qty.	Std. Ctn. Qty.
<b>CAFPABL-X</b>	Clipsal/HPM* faceplate adapter bezel, Black.	10	50
<b>CAFPAWH-X</b>	Clipsal/HPM* faceplate adapter bezel, White.	10	50

\*Clipsal is a registered trademark of Clipsal Australia Pty Ltd.; HPM is a registered trademark of HPM Pty Ltd. of Australia.

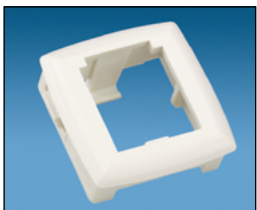
**Faceplate**



**UICFPHSEA2EW**

Part Number	Description	Std. Pkg. Qty.	Std. Ctn. Qty.
<b>UICFPHSEA2EW</b>	Ultimate ID™ Executive Faceplate, two module, horizontal, European White.	1	10
<b>UICFPHSEA4EW</b>	Ultimate ID™ Executive Faceplate, four module, horizontal, European White.	1	10

**Work Station Mini Faceplate**



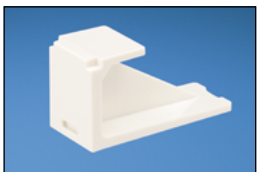
**CMAA1IW-X**

Part Number	Description	Std. Pkg. Qty.	Std. Ctn. Qty.
<b>CMAA1BL-X</b>	Mini-Com™ Adapter to suit 25mm x 25mm cut out, Black.	10	100
<b>CMAA1IW-X</b>	Mini-Com™ Adapter to suit 25mm x 25mm cut out, Off White.	10	100

**Surface Mount Box**



**CBX2IW-AY**



**CMBIW-X**



**UILC2CL-X  
UILC4CL-X**

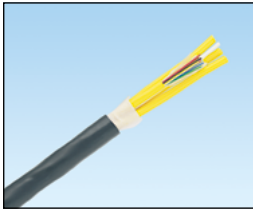
Part Number	Description	Std. Pkg. Qty.	Std. Ctn. Qty.
<b>CBX2IW-AY</b>	2-port surface mount box, Off White.	1	10
<b>CBX2WH-AY</b>	2-port surface mount box, White.	1	10
<b>CBX4IW-AY</b>	4-port surface mount box, Off White.	1	10
<b>CBX4WH-AY</b>	4-port surface mount box, White.	1	10
<b>CBXFM6CRD</b>	6-port surface mount box with Red metal base.	1	–

**Blank Modules and Covers**

<b>CMBBL-X</b>	Mini-Com™ 1-port blank module, Black.	10	50
<b>CMBIW-X</b>	Mini-Com™ 1-port blank module, Off White.	10	50
<b>CMBWH-X</b>	Mini-Com™ 1-port blank module, White.	10	50
<b>UILC2CL-X</b>	2-port label cover for use with Ultimate ID™, Clear.	10	100
<b>UILC4CL-X</b>	4-port label cover for use with Ultimate ID™, Clear.	10	100

Contact Panduit Customer Service for other colours.

## Fibre Optic Cable – Indoor/Outdoor



Part Number	Description	UOM	MOQ
FLKLX06	6-fibre OM3 10 GbE multimode LSZH all-dielectric cable with tight buffered fibres.	Metre	1000
FLKLX12	12-fibre OM3 10 GbE multimode LSZH all-dielectric cable with tight buffered fibres.	Metre	1000
FLKL906	6-fibre OS2 singlemode LSZH all-dielectric cable with tight buffered fibres.	Metre	1000
FLKL912	12-fibre OS2 singlemode LSZH all-dielectric cable with tight buffered fibres.	Metre	1000

## Fibre Connectors and Patch Cords



FLCSMCXAQY



FSCSCBU



FX23LSNSNSNM\*\*\*



FX2ELLNLNSNM\*\*\*

Part Number	Description	Std. Pkg. Qty.	Std. Ctn. Qty.
-------------	-------------	----------------	----------------

### OptiCam™ Pre-Polished Connectors\*

FLCSMCXAQY	LC 50/125µm OM3/OM4 multimode simplex connector, Aqua boot.	1	10
FLCSMCBUY	LC 9/125µm singlemode simplex fiber optic connector for 900µm.	1	10
FSCMCXAQ	SC 50/125µm OM3/OM4 multimode simplex connector, Aqua boot.	1	10
FSCSCBU	SC 9/125µm singlemode simplex connector, Blue boot.	1	10

### Fibre Patch Cords

FX23LSNSNSNM001	SC 50/125µm OM3, 3mm LSZH jacket duplex patch cord, 1m.	1	10
FX23LSNSNSNM002	SC 50/125µm OM3, 3mm LSZH jacket duplex patch cord, 2m.	1	10
FX23LSNSNSNM003	SC 50/125µm OM3, 3mm LSZH jacket duplex patch cord, 3m.	1	10
F923LSNSNSNM001	SC 9/125µm OS2, 3mm LSZH jacket duplex patch cord, 1m.	1	10
F923LSNSNSNM002	SC 9/125µm OS2, 3mm LSZH jacket duplex patch cord, 2m.	1	10
F923LSNSNSNM003	SC 9/125µm OS2, 3mm LSZH jacket duplex patch cord, 3m.	1	10
FX2ELLNLNSNM001	LC 50/125µm OM3, 1.6mm LSZH jacket duplex patch cord, 1m.	1	10
FX2ELLNLNSNM002	LC 50/125µm OM3, 1.6mm LSZH jacket duplex patch cord, 2m.	1	10
FX2ELLNLNSNM003	LC 50/125µm OM3, 1.6mm LSZH jacket duplex patch cord, 3m.	1	10
F92ELLNLNSNM001	LC 9/125µm OS2, 1.6mm LSZH jacket duplex patch cord, 1m.	1	10
F92ELLNLNSNM002	LC 9/125µm OS2, 1.6mm LSZH jacket duplex patch cord, 2m.	1	10
F92ELLNLNSNM003	LC 9/125µm OS2, 1.6mm LSZH jacket duplex patch cord, 3m.	1	10

\*See page 11 for OptiCam™ Tool Kit.  
Contact Panduit Customer Service for other lengths.

**Fibre Enclosures**



FMT1



FCE1U



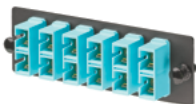
FOSMF

Part Number	Description	Std. Pkg. Qty.	Std. Ctn. Qty.
FMT1	Rack-mount fibre tray, 1 RU. Requires 24-port modular patch panel and Mini-Com™ Adapter Modules.	1	1
FMT1A	Rack-mount fibre tray, angled, 1 RU. Requires 24-port modular patch panel and Mini-Com™ Adapter Modules.	1	1
FCE1U	Rack-mount fibre enclosure, 1 RU. Accepts four fibre adapter panels or QuickNet™ Cassettes.	1	1
FCE4U	Rack-mount fibre enclosure, 4 RU. Accepts twelve fibre adapter panels or QuickNet™ Cassettes.	1	1
FWME2	Wall mount enclosure accepts two fibre adapter panels or QuickNet™ Cassettes.	1	1
FOSMF	Fibre optic splice module, 24 fusion, for rack-mount enclosure.	1	1
FSC24	Fibre splice chip accommodates and protects up to 24 fusion splices, suits wall-mount or rack-mount enclosure.	1	1
F250BT-C	Fibre splice protector.	100	100

**Fibre Adapter Module and Panels**



CMDAQSCZBL



FAP6WAQDSCZ



FXTRL7N7NANM005



FC2XN-12-10AS

Part Number	Description	Std. Pkg. Qty.	Std. Ctn. Qty.
-------------	-------------	----------------	----------------

**Fibre Adapter Modules**

CMDAQSCZBL	SC duplex (Aqua) adapter (Black) Mini-Com™ Module Assembly, zirconia.	1	10
CMDBUSCZBU	SC duplex (Blue) adapter (Blue) Mini-Com™ Module Assembly, zirconia.	1	10
CMDSAQLCZBL	Duplex LC Sr./Sr. (Aqua) adapter (Black) Mini-Com™ Module Assembly, zirconia.	1	10
CMDSLZCZBU	Duplex LC Sr./Sr. (Blue) adapter (Blue) Mini-Com™ Module Assembly, zirconia.	1	10

**Fibre Adapter Panels**

FAP6WAQDSCZ	Fiber adapter panel with six SC duplex (Aqua) adapters, zirconia.	1	10
FAP6WBUDSCZ	Fiber adapter panel with six SC duplex (Blue) adapters, zirconia.	1	10
FAP6WAQDLCZ	Fiber adapter panel with six LC duplex (Aqua) adapters, zirconia.	1	10
FAP6WBUDLCZ	Fiber adapter panel with six LC duplex (Blue) adapters, zirconia.	1	10

**QuickNet™ MPO Cassettes and Interconnect Cables**

FXTRL7N7NANM005	12 core PanMPO™ Interconnect, OM3, 5m.	1	10
FXTRL7N7NANM010	12 core PanMPO™ Interconnect, OM3, 10m.	1	10
FXTRL7N7NANM015	12 core PanMPO™ Interconnect, OM3, 15m.	1	10
FC2XN-12-10AS	Fibre cassette, 6 duplex LC to MPO, 12 core Method A Standard, OM3.	1	10
FC2XN-12-10AF	Fibre cassette, 6 duplex LC to MPO, 12 core modified Method A, flipped, OM3.	1	10

**Fibre Pigtail Sets**



FX1BN3NNNSNM001



FX1BN1NNNSNM001

Part Number	Description	Std. Pkg. Qty.	Std. Ctn. Qty.
FX1BN3NNNSNM001	OM3 1-fibre, 900µm, buffered, SC to pigtail, std. IL., 1m.	1	10
F91BN3NNNSNM001	OS1/OS2 1-fibre, 900µm buffered, SC to pigtail, Std. IL., 1m.	1	10
FX1BN1NNNSNM001	OM3 1-fibre, 900µm, buffered, LC to pigtail, std. IL., 1m.	1	10
F91BN1NNNSNM001	OS1/OS2 1-fibre, 900µm, LC to pigtail, std. IL., 1m.	1	10



## Cabinet



S6512B

Part Number	Description	Std. Pkg. Qty.	Std. Ctn. Qty.
S8512BA9	45 RU 800mm wide x 1070mm deep, perforated front and rear door, solid side panels.	1	1
S6512B	45 RU 600mm wide x 1070mm deep, perforated front and rear door, solid side panels.	1	1
E6412B2	24 RU 600mm wide x 1070mm deep, perforated front and rear doors, solid side panels.	1	1
E6212B1	12 RU 600mm wide x 1070mm deep, perforated front and rear doors, solid side panels.	1	1
PZC12W	Wall mount cabinet with windowed front door.	1	1

## Racks, Shelves and Accessories



R4PCN

Part Number	Description	Std. Pkg. Qty.	Std. Ctn. Qty.
<b>Racks</b>			
R2P	2 post rack, 45 RU, with threaded rails.	1	1
R4PCN	4 post rack, 45 RU with cage nut rails, 760mm deep.	1	1
<b>Shelves</b>			
SRM19FM1	Front mount shelf, 1 RU, 480mm deep.	1	1
RSHLF	Front and rear mount shelf, 1 RU, 760mm deep.	1	1
<b>Rack Accessories</b>			
S1224-C	#12-24 screws.	100	1000
CNWS1224-C	#12-24 cage nut with screws.	100	1000
CNWSM6-C	M6 cage nut with screws.	100	1000
R2PPDUB	PDU mounting kit, suits 2 post rack and 4 post rack.	1	1
<b>Grounding</b>			
RGCBNJ660P22	Common bonding jumper and HTAP.	1	10
CNBK	Green bonding #12-24 cage nuts and bonding screws (package of 50).	1	10
RGTBSG-C	Green thread-forming bonding screw, #12-24 x 1/2".	100	1000

## Cable Managers



NMF4



WMPSE



PRV8

WMPVHC45E

Part Number	Description	Std. Pkg. Qty.	Std. Ctn. Qty.
NMF4	NetManager™ Horizontal cable manager high capacity front only, 4 RU.	1	1
WMPSE	PatchLink™ Horizontal Cable Manager, front and rear, 1 RU.	1	1
WMP1E	PatchLink™ Horizontal Cable Manager, front and rear, 2 RU.	1	1
WMPFSE	PatchLink™ Horizontal Cable Manager, front only, 1 RU.	1	1
WMPF1E	PatchLink™ Horizontal Cable Manager, front only, 2 RU.	1	1
PRV8	PatchRunner™ Dual-Sided Vertical Cable Manager, 8 inch.	1	1
PRVF8	PatchRunner™ Single-Sided Vertical Cable Manager, 8 inch.	1	1
PRD8	PatchRunner™ Door, 8 inch.	1	1
PRV12	PatchRunner™ Dual-Sided Vertical Cable Manager, 12 inch.	1	1
PRD12	PatchRunner™ Door, 12 inch.	1	1
PREP	PatchRunner™ End Panel.	1	1
WMPV45E	NetRunner™ Dual-Sided Vertical Cable Manager, 125mm wide.	1	1
WMPVHC45E	NetRunner™ Dual-Sided High-Capacity Vertical Cable Manager, 170mm wide.	1	1

**Cable Manager Capacity Chart**

Part Number	Description	Front				Rear			
		Cat. 6A-SD	Cat. 6A	Cat. 6	Cat. 5e	Cat. 6A-SD	Cat. 6A	Cat. 6	Cat. 5e
<b>NMF4</b>	Horizontal cable manager high capacity front only, 4 RU.	210	132	210	210	N/A	N/A	N/A	N/A
<b>WMPSE</b>	PatchLink™ Horizontal Cable Manager, front and rear, 1 RU.	—	—	16	24	—	—	16	24
<b>WMP1E</b>	PatchLink™ Horizontal Cable Manager, front and rear, 2 RU.	—	—	48	72	—	—	48	72
<b>WMPFSE</b>	PatchLink™ Horizontal Cable Manager, front only, 1 RU.	—	—	16	24	—	—	N/A	N/A
<b>WMPF1E</b>	PatchLink™ Horizontal Cable Manager, front only, 2 RU.	—	—	48	72	—	—	N/A	N/A
<b>PRV8</b>	PatchRunner™ Dual-Sided Vertical Cable Manager, 8 inch.	419	268	419	477	301	193	301	343
<b>PRVF8</b>	PatchRunner™ Single-Sided Vertical Cable Manager, 8 inch.	419	268	419	477	N/A	N/A	N/A	N/A
<b>PRV12</b>	PatchRunner™ Dual-Sided Vertical Cable Manager, 12 inch.	674	431	674	767	477	305	477	543
<b>WMPV45E</b>	NetRunner™ Dual-Sided Vertical Cable Manager, 125mm wide	143	91	143	162	N/A	N/A	N/A	N/A
<b>WMPVHC45E</b>	NetRunner™ Dual-Sided High-Capacity Vertical Cable Manager, 170mm wide	266	170	266	303	266	170	266	303

**Power Distribution Unit**



**HBOD2J0AA10M1**

Part Number	Description	Std. Pkg. Qty.	Std. Ctn. Qty.
<b>HBOD2J0AA10M1</b>	Horizontal power strip with a 16 A, 230V, 10 IEC C-13 receptacles, with C-20 power inlet.	1	1
<b>VBOD2J0AA20M1</b>	Vertical power strip with a 16 A, 230V, 20 IEC C-13 receptacles, with C-20 power inlet.	1	1

**Blanking Panels**



**TLBP1S-V**

Part Number	Description	Std. Pkg. Qty.	Std. Ctn. Qty.
<b>TLBP1S-V</b>	Toolless blanking panel, 1 RU, suit cage nut holes.	5	50
<b>CPAF1BLY</b>	Blanking panel, angled, 1 RU.	1	10

**Enclosures**



**WMCPE**

Part Number	Description	Std. Pkg. Qty.	Std. Ctn. Qty.
<b>Consolidation Point</b>			
<b>WMCPE</b>	Wall mount punchdown consolidation point enclosure.	1	1
<b>GPB24-X</b>	GP6™ Category 6/6A Punchdown base, 96 pair.	10	10
<b>GPCB4-CY</b>	GP6™ Category 6/6A 4-Pair Punchdown Connector Block.	100	100



**PZAEWM3**

Part Number	Description	Std. Pkg. Qty.	Std. Ctn. Qty.
<b>Zone Enclosures</b>			
<b>PZAEWM3</b>	Active wall mount enclosure, 4 RU passive, 2 RU active..	1	1
<b>PZICEE</b>	In-ceiling consolidation point enclosure, 8 RU capacity.	1	1
<b>PZLRB4U</b>	Ladder rack bracket, 4 RU.	1	1

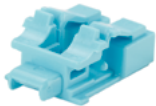
## Labeling



LS8EQ-KIT

Part Number	Description	Std. Pkg. Qty.	Std. Ctn. Qty.
LS8EQ-KIT	LS8EQ hand-held printer with QWERTY keypad.	1	1
UILS8BW	Ultimate ID™ Label Cassette.	1	10
C252X030FJC	Modular patch panel (CP) adhesive label cassette.	1	10
C261X035Y1C	Modular patch panel (CPPL) label cassette.	1	10
S100X150VAC	Cable self-laminating label cassette.	1	10
R100X150V1C	Turn-Tell™ Patch Cord Label Cassette.	1	10

## Security Devices



PSL-LCAB-AQ



FLCCLIW-X



PSL-DCJB



PSL-DCPLRX

Part Number	Description	Std. Pkg. Qty.	Std. Ctn. Qty.
PSL-LCAB-AQ	LC duplex adapter blockout device, ten devices (Aqua) and one removal tool (Black).	1	20
PSL-LCAB-BU	LC duplex adapter blockout device, ten devices (Blue) and one removal tool (Black).	1	20
FLCCLIW-X	LC patch plug lock-in device, ten devices and one removal tool.	10	100
PSL-DCJB-BL	Jack module blockout device, ten block-outs (Black) and one removal tool (Black).	1	20
PSL-DCJB-BU	Jack module blockout device, ten block-outs (Blue) and one removal tool (Black).	1	20
PSL-DCJB	Jack module blockout device, ten block-outs (Red) and one removal tool (Black).	1	20
PSL-DCPLRX-BL	Recessed RJ45 plug lock-in device, ten devices (Black) and one installation/removal tool (Black).	1	20
PSL-DCPLRX-BU	Recessed RJ45 plug lock-in device, ten devices (Blue) and one installation/removal tool (Black).	1	20
PSL-DCPLRX	Recessed RJ45 plug lock-in device, ten devices (Red) and one installation/removal tool (Black).	1	20

## Tools



EGJT



TGJT



CBOT24K

Part Number	Description	Std. Pkg. Qty.	Std. Ctn. Qty.
EGJT	TG jack termination tool.	1	—
TGJT	TG jack termination tool, for high-volume installations.	1	—
CJAST	Copper cable jacket stripper.	1	1
CWST	Copper wire snips.	1	1
PDT110	110 punchdown tool.	1	1
GPST	GP6™ Punchdown Tool.	1	1
GPDTM	GP6™ 4-Pair Punchdown Tool.	1	1
CBOT24K	Cable bundle organising tool.	1	10
FCAMKIT	OptiCam™ Termination Kit	1	1



**PANDUIT™**

Panduit International Ltd.  
30 – 36 Kitchen Road  
Dandenong 3175  
Australia

[aus-csvm@panduit.com](mailto:aus-csvm@panduit.com)  
1-800-PANDUIT

[www.panduit.com](http://www.panduit.com)