

Huawei Data Center Infrastructure Management System — iManager NetEco

NetEco is a new generation data center management system launched by Huawei. It manages the real-time data and status of data center infrastructures, including power, environment, video, and door status and generates alarms if any fault occurs.

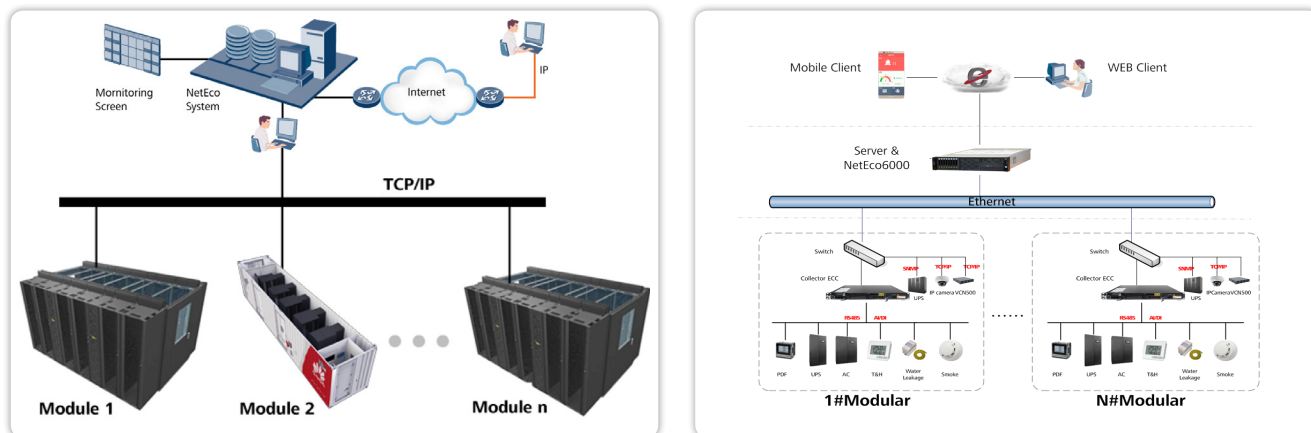
NetEco displays data center layouts and data reports for customers to easily query equipment status, and provides a standard platform to apply to all data center solutions due to its flexible configuration, smooth capacity expansion, and hierarchical management.

HUAWEI TECHNOLOGIES CO., LTD.



Logical Architecture

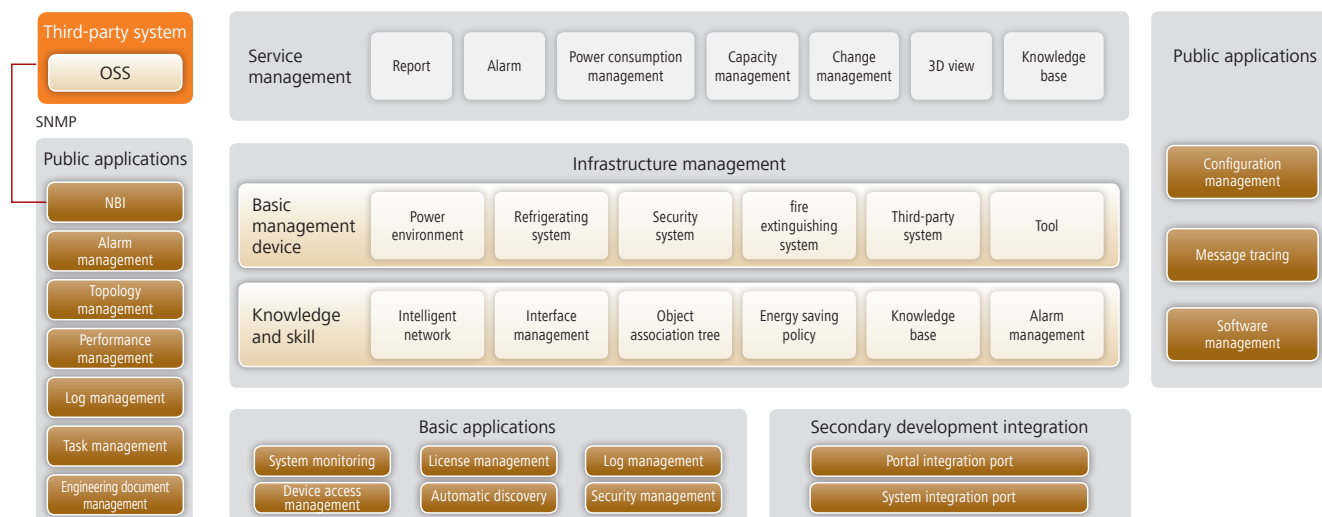
By using a flexible structure and modular design, the NetEco manages infrastructure of not only a single data center but also multiple data centers in various areas.



Product Architecture

Software Structure

NetEco software uses the browser/server (B/S) architecture, runs on the server, and displays information in multiple windows. To upgrade or maintain NetEco, customers only need to operate the software on the server side. Functional components of NetEco software are divided into five parts: basic platform, public application, equipment management, application management, and application integration.



Hardware Structure

The hardware of NetEco is a collector that provides northbound ports and features intelligent power distribution, energy saving, intelligent temperature control, security, monitoring, and remote management. The collector is 1 U high and is installed inside a cabinet.



Monitoring Systems

Bottom-layer equipments can be easily connected to NetEco over Modbus, Simple Network Management Protocol (SNMP), and intelligent equipment communication protocol. Customers can customize NetEco for the support of non-standard protocols. Bottom-layer devices monitored by the NetEco are classified into the power system, environment system, video system, and access system.

Power System

Precision air conditioner, UPS, PDU, UPS input cabinet, UPS output cabinet, Precise PDF, AC PDF

Environment System

Temperature and humidity sensor, smoke sensor, water sensor

Video System

Camera, NVR (Optional)

Access System

Door access controller

Functions

NetEco provides comprehensive functions for managing data center infrastructures.

Analysis Level

Power Analysis



Capacity Management



Management Level

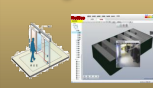
Resource Management



Work-Order Management



System (Safety) Management

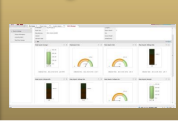


Monitoring Level

View Management



Performance Management



Report Management



Fault Management



Customer Values

High availability, warning and troubleshooting

- Foresight warning of faults and risks improves IDC availability.
- Quickly faults location, virtual inspection
- Work order system speeds up maintenance

Smart interaction, energy saving

- Dynamic PUE management
- Optimizing important power and cooling services
- Smart interaction with 'Cloud' platform

Rapid deployment, one -button launching

- Pre-configured software and parameters, one-button launching
- Parameters of AC and UPS loading, testing time saving

Easy visualization maintenance in 3D view

- The 3D design tool realizes 3D visual maintenance
- Dynamic 3D display of site temperature, eliminating hot spots

Successful Applications

HUAWEI NetEco data center infrastructure management system has been widely used in the world, such as China Mobile, China Unicom, China Telecom Data Center, as well as in Hongkong, Poland, the United Kingdom, Germany, Russia and other countries and regions of multiple data centers.



Copyright © Huawei Technologies Co., Ltd. 2015. All rights reserved.

General Disclaimer

The information in this document may contain predictive statements including, without limitation, statements regarding the future financial and operating results, future product portfolio, new technology, etc. There are a number of factors that could cause actual results and developments to differ materially from those expressed or implied in the predictive statements. Therefore, such information is provided for reference purpose only and constitutes neither an offer nor an acceptance. Huawei may change the information at any time without notice.

HUAWEI TECHNOLOGIES CO., LTD.

Huawei Industrial Base

Bantian Longgang

Shenzhen 518129, P.R. China

Tel: +86-755-28780808

Version No.: M3-308130201-20151008-C-1.0

www.huawei.com

